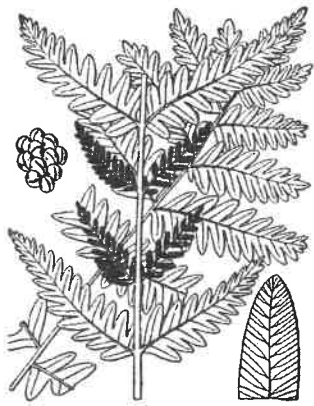


# FERNS

of

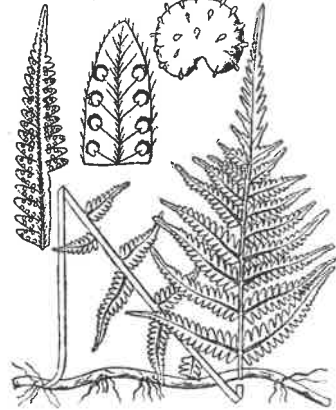
## Jug Bay Wetlands Sanctuary



### Interrupted; to 36"

Interruptions. Tall stalks of fertile leaves with widely spaced lower leaflets. Smaller, arching sterile leaves. Taller and more erect fertile leaves. Overlapping sterile subleaflets.

*Osmunda claytoniana*



### New York; 18"

Double-tapering leaf. Tiny bottom leaflets close to rootstock. Leaf growing in semi-tufts of 3 leaves from branching rootstock. Few small fruit-drops near margins. See Eastern Marsh, very similar.

*Thelypteris noveboracensis*

### Sensitive; a few inches to 36"

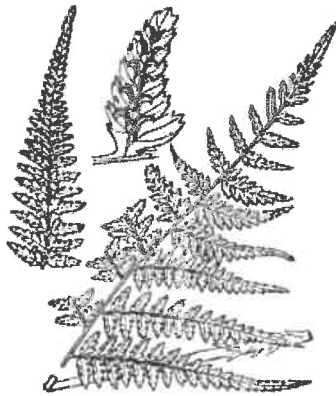
Leaves opposite (or nearly). Beaded fertile leaf on separate stalk.

*Onoclea sensibilis*



### Ladyfern, Common; 30"

Relaxed tips. Growth form in circular clusters. Cut and toothed subleaflets. Smooth stalks with few pale scales. Eyebrow shaped sori. Often confused with Spinulose Woodferns, which have scaly stalks.



*Athyrium filix-femina*

### Rattlesnake; 12"

Sporophyll (leaf that bears spores) stalk grows from leaflets at the juncture of main stalk and leaf. Horizontal, coarse, shallow root with vertical budlike growths.

*Botrychum virginianum*



### Spleenwort, Ebony; 15"

Leaflets not opposite and are eared. Tall and erect fertile leaves. Short and pendent sterile leaves, more rounded and crowded together. There are many spleenworts, this is the only one on the Jug Bay plant list.

*Asplenium platyneuron*

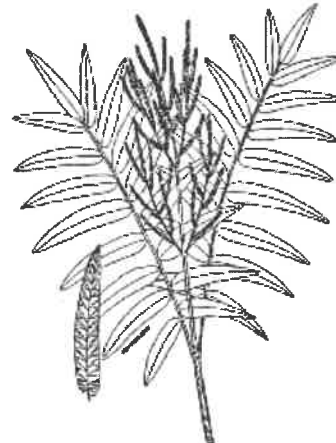
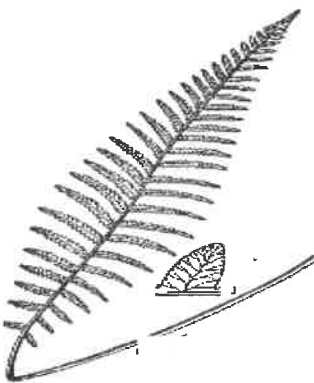


### Marsh, Eastern; 6 to 24"

Twisting growth form. Tall, slender, smooth stalk. Fertile subleaflets with numerous fruitdrops in close rows near midvein.

See New York, very similar.

*Thelypteris palustris*



### Royal; 48"

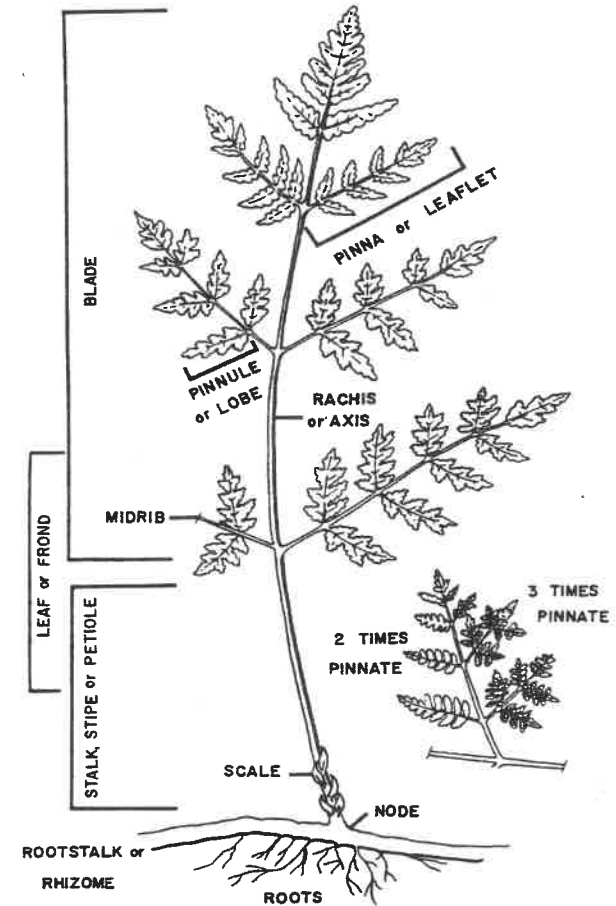
Fertile leaflets at top of leaf. Leaflets widely spaced and opposite. Subleaflets narrow oblong, widely spaced, not opposite.

*Osmunda regalis*

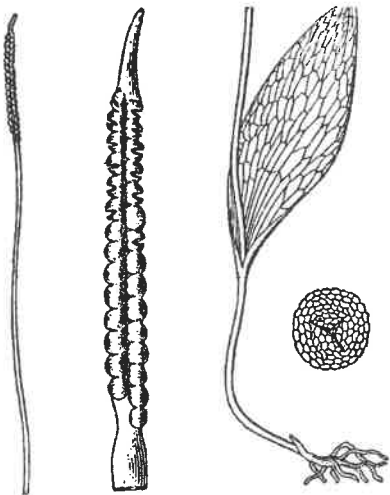
### Woodfern, Spinulose; 30"

Semi-erect coarse rootstock with leaves growing in bouquet-like clusters. Lacy-cut, lance-shaped leaves. Very scaly stout stalks. Similar to Lady (slim & smooth stalks).

*Dryopteris carthusiana*



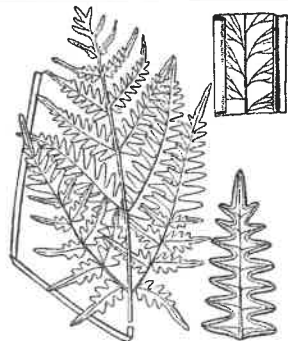
PARTS of a FERN



**Adderstongue, Southern; 12 "**

Small, elusive, unfernlike plant, with simple, narrow, oblong grass-green single leaf attached half-way up delicate, smooth, and fleshy stalk tipped by fertile spike, which resembles a snake's tongue. Soon withering in mid-summer.

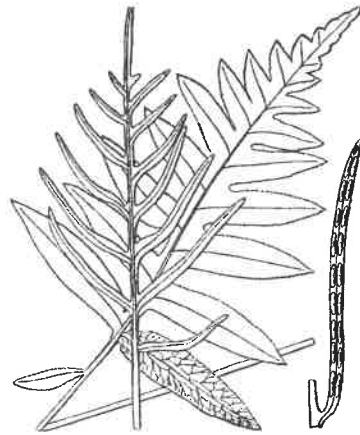
*Ophioglossum vulgatum*



**Brackenfern, Western; 36"**

Strong and coarse. Multiple branching stems and triangular-shaped leaves with many leaflet-like segments. This fern does not grow in clusters as many ferns do. It produces tiny brown spore clusters July through September. Smooth and grooved stalk. One of the earliest to appear and continues to produce new leaves all season. Killed by first frost.

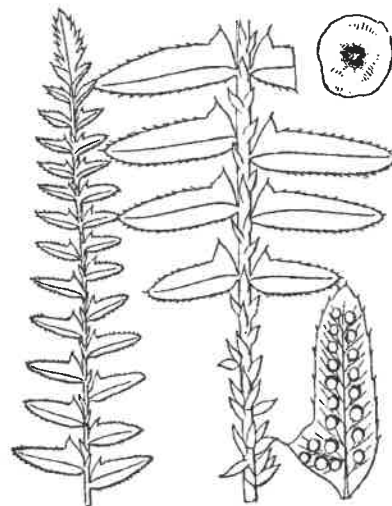
*Pteridium aquilinum*



**Chainfern, Netted; 24"**

Leaves alternate. Like a small sensitive fern. Lowest pair of leaflets not winged at axis. Fertile leaf with long, thin, and contracted leaflets. Wavy margin to leaflet with finely toothed edges.

*Woodwardia areolata*



**Christmas; 24"**

Leaflets eared at axis. Think of Santa's boot with heel (upside down). Scaly stalk. Down-pointed two lowest leaflets. Rapidly tapering top part of fertile leaf.

*Polystichum acrostichoides*



**Cinnamon; 36"**

Woolly tuft at base of leaflet. Clublike fertile leaf. Subleaflets are veined. In spring, fertile leaflet (club-like) is cinnamon in color when mature; sometimes persisting through the season.

*Osmundastrum cinnamomea*



**Grapefern, Cutleaf; 6 to 15"**

Sterile leaf and stalk branching from main stalk close to surface of soil. Erect and slightly branched sporophyll (leaf that bears spores). Sterile leaves late appearing and last through the winter and spring, turn bronze with frost.

*Botrychium dissectum*



**Grapefern, Sparse-lobed; 6-12" (or Southern)**

Single, triangular, leathery leaf; triangular leaf segmented in three's; the fertile and sterile leaves are joined near the rhizome at or near ground level. Sends up new leaf in fall that then dies back in spring.

*Botrychium biternatum*

**Hayscented, Eastern; 16"**

Not clumped. Narrow lance-shaped blades with narrowly pointed and relaxed tips. Smooth or slightly hairy stalks. Leaves growing singly along creeping rootstock. Distinguished from Lady by its widely spreading growth in single leaves and from Woodfern by smooth, slender, brittle stalks.



*Dennstaedtia punctilobula*



**Rock Polypody**

Uncommon but found along hillside, south end of the Boardwalk, beyond the observation deck (overhead).

*Polypodium virginianum*