

Jug Bay Wetlands Sanctuary

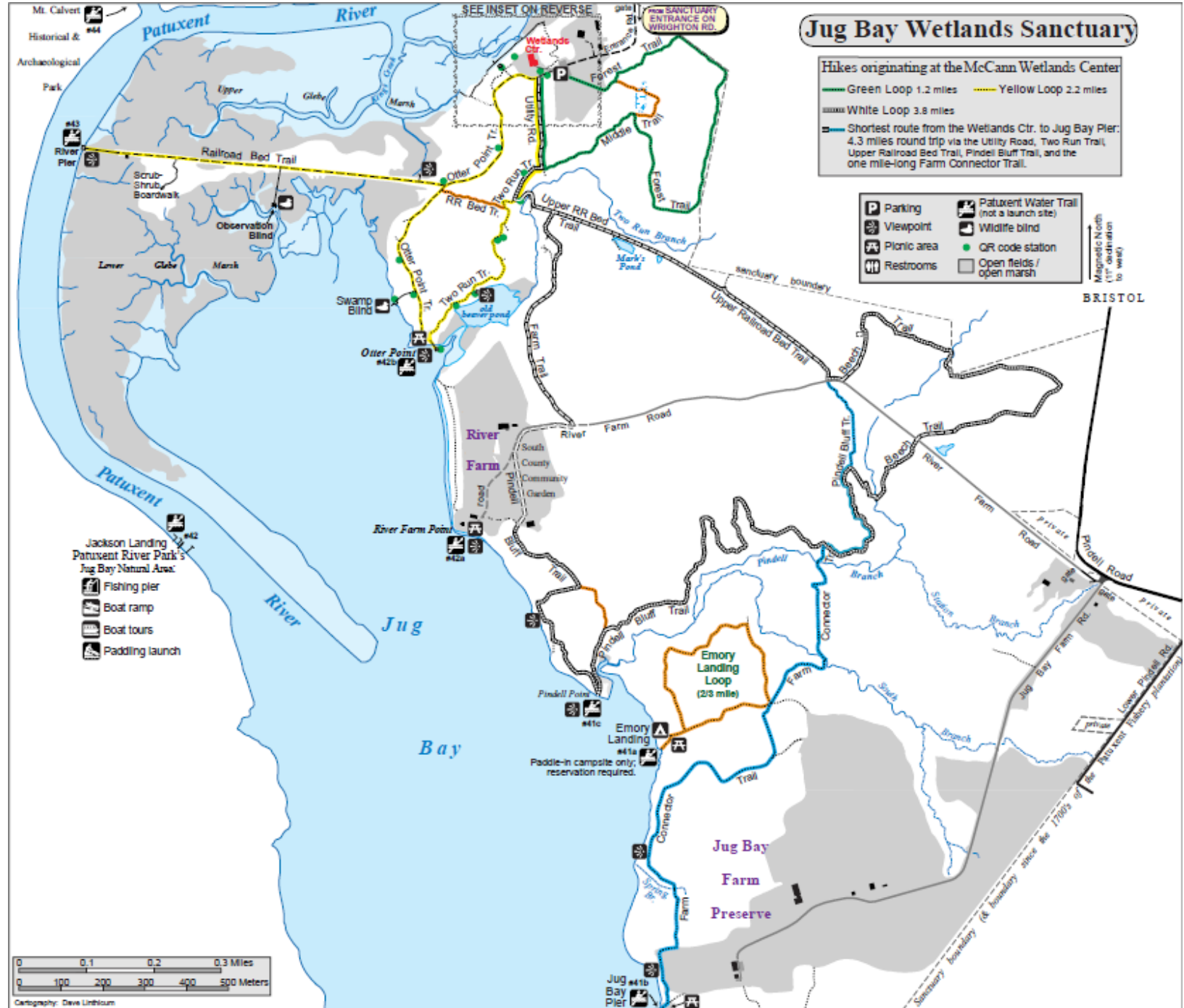
Hikes originating at the McCann Wetlands Center

- Green Loop 1.2 miles
- Yellow Loop 2.2 miles
- White Loop 3.8 miles

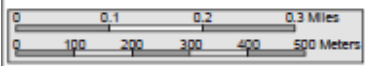
— Shortest route from the Wetlands Ctr. to Jug Bay Pier:
4.3 miles round trip via the Utility Road, Two Run Trail, Upper Railroad Bed Trail, Pindel Bluff Trail, and the one mile-long Farm Connector Trail.

- | | |
|----------------------|---------------------------------------------------|
| P Parking | W Patuxent Water Trail (not a launch site) |
| V Viewpoint | WB Wildlife blind |
| A Picnic area | QR QR code station |
| R Restrooms | □ Open fields / open marsh |

Magnetic North
(1° deviation to west)



- Jackson Landing
Patuxent River Park's
Jug Bay Natural Area:
- F** Fishing pier
 - B** Boat ramp
 - T** Boat tours
 - L** Paddling launch

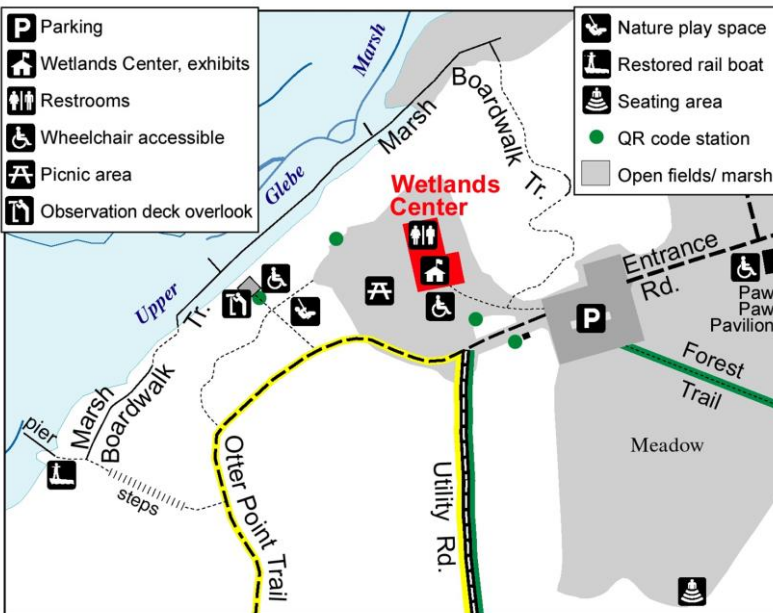


Cartography: Dave Lintburn

Sanctuary Proper

Hours: 9:00 am – 5:00 pm
Wednesday, Friday, Saturday, Sunday
(Closed Sundays; December – February)

Address: 1361 Wrighton Rd.
Bristol-Lothian, MD 20711
Phone: 410-741-9330



Scan the QR code to take a one minute survey & enter for a chance to win a **FREE** annual membership to the Friends of Jug Bay!



Get Involved at Jug Bay!

Regular visitors are encouraged to join the Jug Bay community as a member and/or volunteer. Visit www.jugbay.org to learn more.

